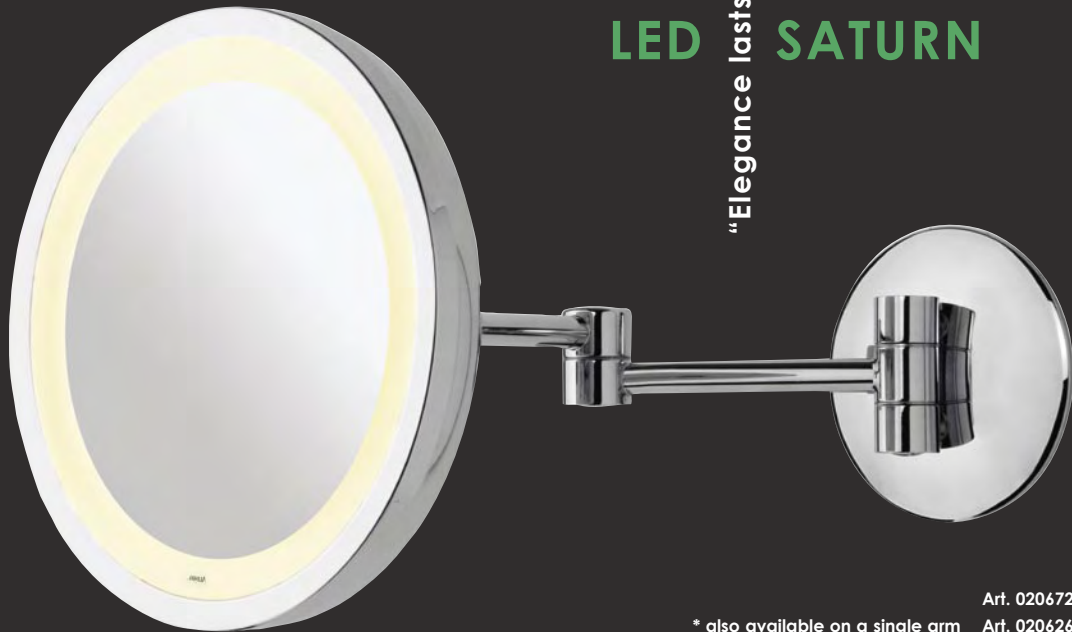


LED lasts forever

LED SATURN



Art. 020672

* also available on a single arm Art. 020626

Revolutionary LED lighting system consumes 50 % less energy

EcoSmart LED Technology

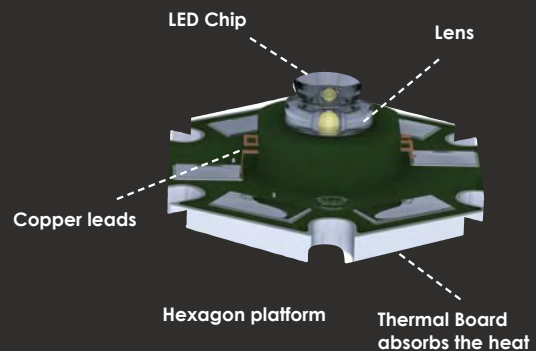
- Consumes 50 % less energy
- 50,000 hrs. life span
- Maintenance free - No bulbs to replace
- Full circle pin-point illumination
- Low heat yield permits a sealed mirror housing

Design and Construction

- Distinctive ultra thin profile in a classic design
- Innovative flat screen reflection
- Full pivotal easy adjustments
- IP 44 protection

HIGH POWER SUPER LEDs

For maximum efficiency and energy reduction



Aliseo as an ECCO Company
ECCO - Environmentally Conscious Company
is committed to conserving the world's energy resources through technological advancement.



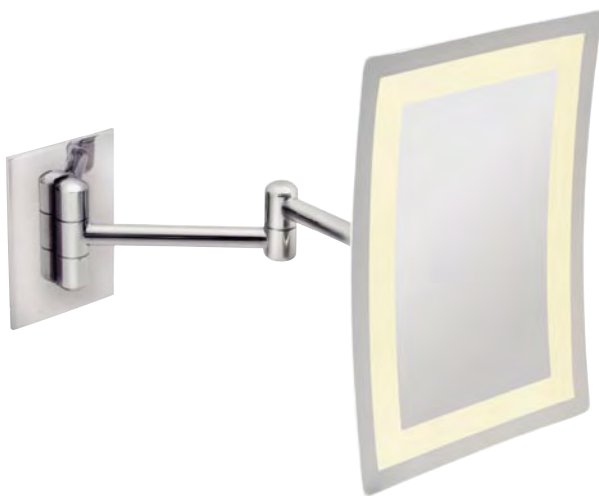
LED CUBIK

Art. 020667

* also available on a single arm Art. 020666

LED CUBIK

LED-lighting. Twin arm. 3x magnification. Ultra-thin profile. Full pivotal adjustment. Hard wired. 220 - 250 V. Covered backplate. Finish: chrome. 215 x 215 mm.



LED LUNATEC MINIMALIST

Art. 020688

LED LUNATEC MINIMALIST

LED-lighting. Twin arm. 3x magnification. Ultra-thin profile. Full pivotal adjustment. Hard wired. 220 V. Covered backplate. Finish: chrome. 160 X 220 mm

COSMO MINIMALIST



Art. 020564

COSMO CUBIK

Free standing. 3x magnification. Full pivotal adjustment. Finish: chrome. 160 x 240 mm.



LED LUNATEC

Art. 020601

* also available on a single arm Art. 020600

Space-Saving Multiflex Fold-Away Design



LED LUNATEC

LED-lighting. Twin arm. 3x magnification. Ultra-thin profile. Full pivotal adjustment. Hard wired. 220 - 250 V. Covered backplate. Finish: chrome. Ø 240 mm.

LUNA



Art. 020598

* also available on a twin arm Art. 020599

LUNA

Single arm. 3x magnification. Covered backplate. Full pivotal adjustment. Finish: chrome. Ø 240 mm.



LED CITY LIGHT

Art. 020598

* also available on a twin arm Art. 020599

LED CITY LIGHT

Single arm. 3x magnification. Covered backplate. Full pivotal adjustment. Finish: chrome. Ø 240 mm.

BLACK MAMBO

“More than hot air!”

The Professional **DRAWER** Solution

Equipped with long-life AC motor and comfortable rubberized coating with anti-slip protection. A variety of user-friendly heat and speed settings with two diffusers for maximum styling. Available with/without Hotel safety switch and cold shot button.



1600 W with hotel safety switch Art. 010444
1600 W with cold shot button Art. 010455

1800 W with hotel safety switch Art. 010461
1800 W with cold shot button Art. 010460

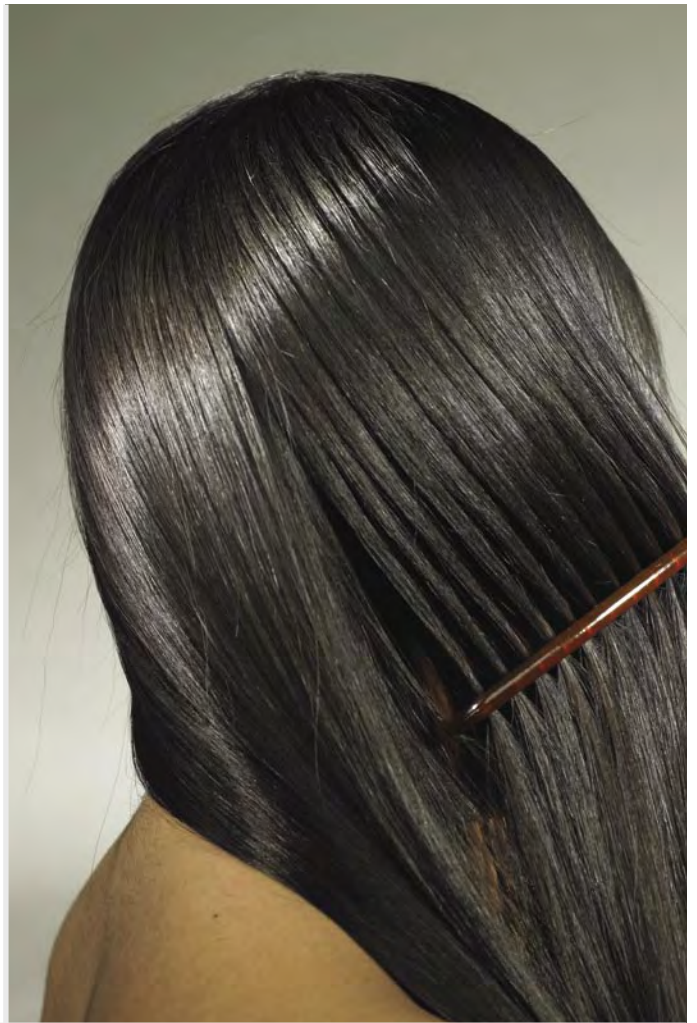
PHOENIX-M



Art. 010449

PHOENIX M - Drawer Solution

Hard wire application. 40 cm coil cord extendable to 120 cm. Safety release button. Interrupter switch. 220-250 V, 50/60 Hz, 600/1200 W. Chrome/black.



NOSTALGIE

Art. 010341

NOSTALGIE IONIC CARE

Ionic technology. Spiral holder. Safety release button. Coil cord with plug. 220-240 V, 50/60 Hz. 500/1000 W - AC-Motor. Chrome/black.



CHROMO

Art. 010407

CHROMO

Black insulated holder. Safety release button. Interrupter switch. Hard wired. 220-240 V, 50/60 Hz. 600/1200 W. Chrome/black.



ALISEO KERAMIC
with KAT Ceramic Airwave Technology

Art. 010384

ALISEO KERAMIC

Keramic Technology. Cold shot button. Safety release button. Interrupter switch. Hard wired. 220-250 V, 50/60 Hz. Cool/800/1600 W. Silver/black. Requires 30 % less energy and 50 % less drying time!



ALISEO IONIC

*"Dries Hair without
Drying out!"*

Art. 010385

ALISEO IONIC

Ionic technology. Cold shot button. Safety release button. Interrupter switch. Hard wired. 220-250 V, 50/60 Hz. Cool/800/1600 W. Silver/black. Requires 30 % less energy and 50 % less drying time!



PHOENIX-R

Art. 010227

PHOENIX-R

Integrated shaver socket - 110/220 V. Safety release button. Interrupter switch. Hard wired. 220-250 V, 50/60 Hz, 600/1200 W. Silver/black.

EcoSmart
Energy Saving, 1200 W



FIZZ... Art. 170188
Tray Set Art. 170190

WATER KETTLE FIZZ... WITH TRAY SET

1.1 l capacity. Integrated heating element. Cordless. Auto shut-off. Boil dry protection. Indicator light. 1200 W. Ivory.
Tray set: 400 x 300 x 20 mm. Material: Melamine. Ivory.



Secure Ironing Convenience



Art. 160124

SURF CENTRE WITH DRY IRON NAVARRO

Easy hang-up storage. Double V leg design for increased stability. Surface: 40 x 96 cm. Height open: 90 cm. Silver. Theft-proof Hotel Dry Iron: Double auto shut-offs. Non-stick coating. 1100 W. Silver.

EcoSmart
Energy Saving, 1200 W



EMPIRE Art. 170167
Tray Set Art. 170189

WATER KETTLE EMPIRE WITH TRAY SET

1.0 l capacity. Integrated heating element. Cordless. Auto shut-off. Boil dry protection. Indicator light. 1200 W. Chrome/black. Tray set: 400 x 330 x 20 mm. Material: Melamine. Black.



Art. 170119

WATER KETTLE FUSION

1.0 l capacity. Integrated heating element. Cordless. Auto shut-off. Boil dry protection. 2000 W. Black/chrome.

NOW



Art. 740007

TOILET ROLL HOLDER

138 x 98 x 55 mm (W x H x D)
Brass, chrome finish



Art. 740012

SOAP DISH

118 x 65 x 129 mm (W x H x D)
Brass, chrome finish. Frosted glass.



Art. 740010

GLASS HOLDER

74 x 98 x 107 mm (W x H x D)
Brass, chrome finish. Frosted glass.



Art. 740001

TOWEL RACK

498 x 105 x 231 mm (W x H x D)
Brass, chrome finish



Art. 740016

HOOK

48 x 48 x 50 mm (W x H x D)
Brass, chrome finish



Art. 740018

TOILET BRUSH HOLDER

84 x 360 x 84 mm (W x H x D)
Stainless steel, chrome finish



Art. 740017

SPARE ROLL HOLDER

48 x 164 x 72 mm (W x H x D)
Brass, chrome finish



Art. 740006

TOILET ROLL HOLDER

138 x 132 x 56 mm (W x H x D)
Brass, chrome finish.



SAFETY BARS



Art. 720021

SAFETY BAR ETERNITY

57 x 357 x 125 mm (W x H x D)
Brass, chrome finish

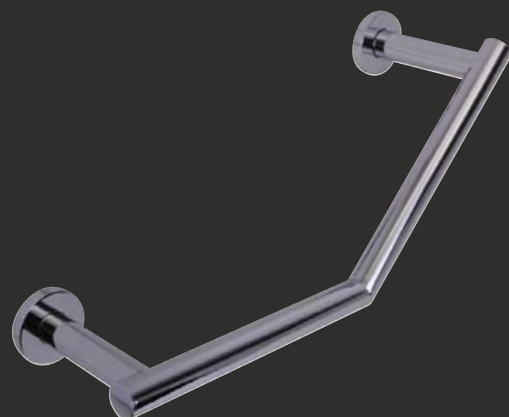
*"Safety and Security
for You and Your Guests"*



"Adjusts to left and right hand installations" Art. 710056

SAFETY BAR TECNO

413 x 204 x 125 mm (W x H x D)
Brass, chrome finish



Art. 740025

SAFETY BAR NOW

413 x 204 x 125 mm (W x H x D)
Brass, chrome finish



Art. 030408

SAFETY BAR HOTELPERFEKTION

350 x 50 x 80 mm (W x H x D)
Brass, chrome finish

Distributed by:

Дистрибутор:

1 1 1
1618 София, кв. Овча Купел, ул. Калояново 14,
Бизнесцентър ПАНГЕЯ, ет. 2
тел. (02) 855 85 77, 856 90 67, факс 955 95 45
moskov@applet-bg.com www.moskov.com

ALISEO GmbH
G E R M A N Y

www.aliseo.de